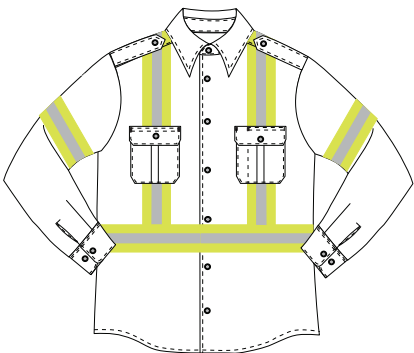
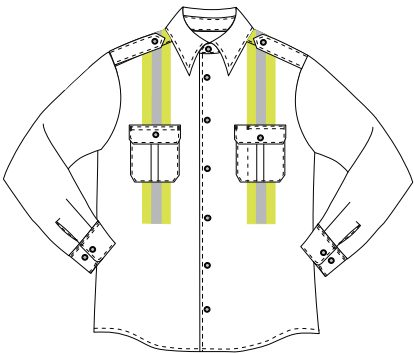


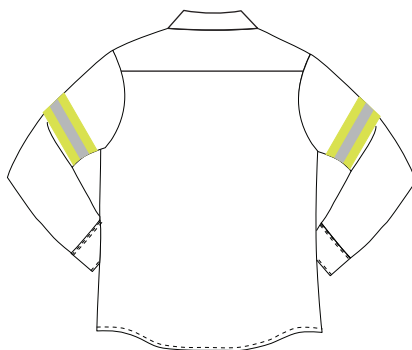
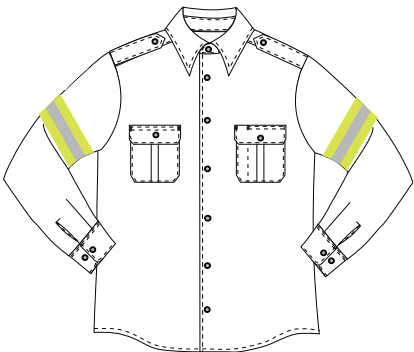
Full taping through pockets:
vertical from shoulder down to
waistline (including front pockets)
big X at back, horizontal band
around waist and band around arms



Full taping:
vertical from shoulder down to
waistline (excluding front pockets)
big X at back, horizontal band
around waist and band around arms



Front & Back taping:
vertical from shoulder down to
waistline (excluding front pockets)
big X at back



Arms only

Send your enquiry by email to: orderdesk@spirito.com or by phone at: 905-565-7576.